

# Columbus and Bay

SAN FRANCISCO, CALIFORNIA



5,700 SQUARE FEET  
DIVISIBLE

NEIGHBORHOOD  
NORTH BEACH

ASKING  
NEGOTIABLE

APPROX. NET CHARGES  
\$0.78 PER SQ FT, PER MONTH

CALL **GARY WARD**  
EMAIL [GWARD@BLATTEISREALTY.COM](mailto:GWARD@BLATTEISREALTY.COM)  
DIRECT 415-321-7483  
FAX 415-981-4986  
DRE# 01208708

**Dynamic and highly visible** retail location at Bay and Columbus intersections

**Walking distance** to Fisherman's Wharf, Pier 39, North Beach, Ghirardelli Square, and historic cable car lines

**3,000 hotel rooms nearby** including Hilton and Marriott across the street

**60,000 permanent residents** within one mile radius who earn \$100,000+ annually

**Historic** former Tower Records Classical Annex

**National chains** permitted

**Unique architecture** offers maximum signage

**Convenient customer parking** available

**Highly suitable** for retail and restaurant uses

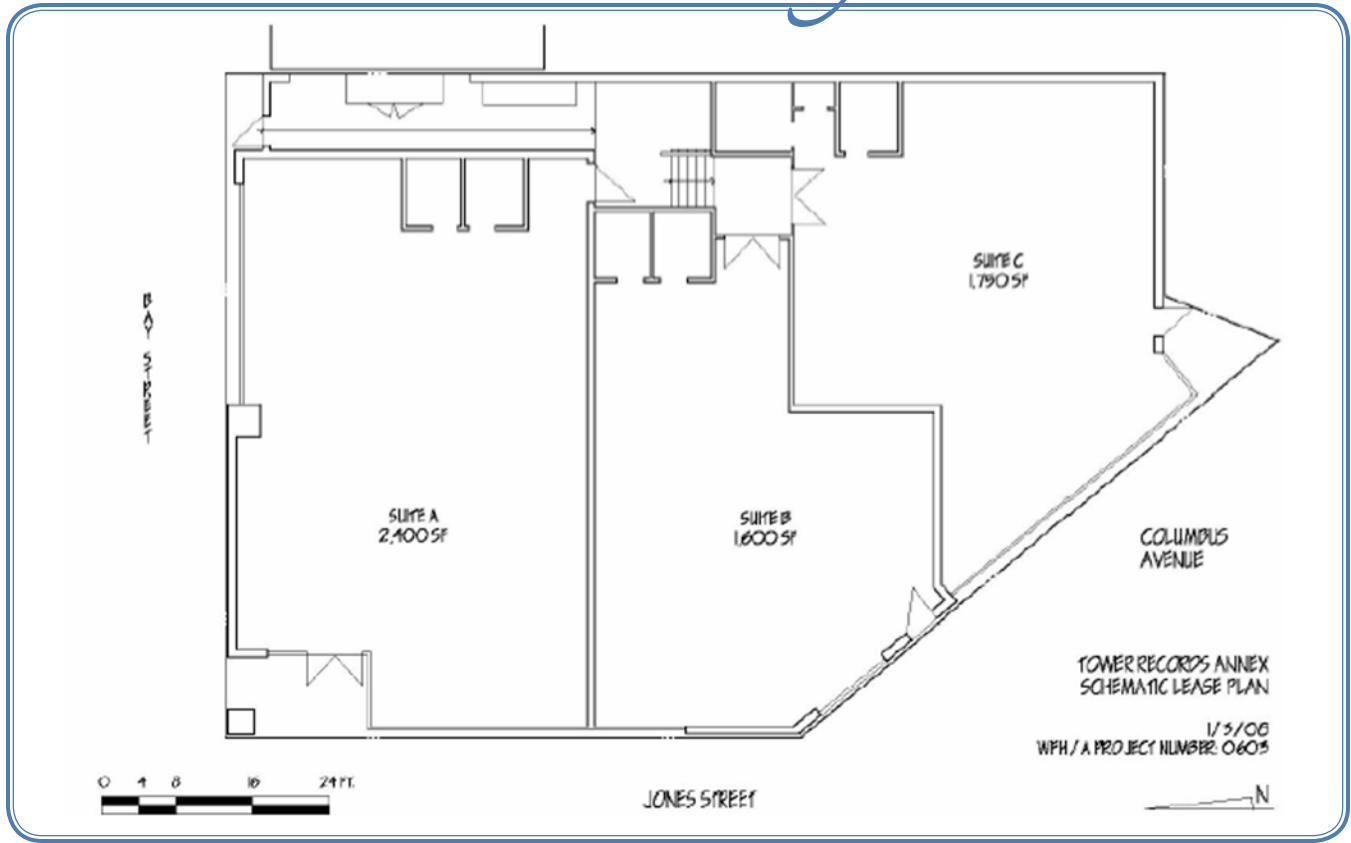
44 MONTGOMERY STREET, SUITE 1288, SAN FRANCISCO, CA 94104 [WWW.SFRETAIL.NET](http://WWW.SFRETAIL.NET) DRE# 01421282



This statement with the information it contains, is given with the understanding that all negotiations relating to the purchase, renting or leasing of the property described above shall be conducted through this office. The above information, while not guaranteed, has been secured from sources believed to be reliable. We have not verified its accuracy and make no guarantee, warranty or representation regarding this information and it is published subject to the possibility of errors, omissions, changing of listing information including price, term, financing, or withdrawal without notice. We include projections, estimates, opinions, and/or assumptions, for example only, and they may not represent current or future performance of the property. You should consult your tax and legal advisors before to verify the validity of our estimates.

# Columbus and Bay

SAN FRANCISCO, CALIFORNIA



CALL **GARY WARD**  
 EMAIL [GWARD@BLATTEISREALTY.COM](mailto:GWARD@BLATTEISREALTY.COM)  
 DIRECT 415-321-7483  
 FAX 415-981-4986  
 DRE# 01208708

44 MONTGOMERY STREET, SUITE 1288, SAN FRANCISCO, CA 94104 WWW.SFRETAIL.NET DRE# 01421282



This statement with the information it contains, is given with the understanding that all negotiations relating to the purchase, renting or leasing of the property described above shall be conducted through this office. The above information, while not guaranteed, has been secured from sources believed to be reliable. We have not verified its accuracy and make no guarantee, warranty or representation regarding this information and it is published subject to the possibility of errors, omissions, changing of listing information including price, term, financing, or withdrawal without notice. We include projections, estimates, opinions, and/or assumptions, for example only, and they may not represent current or future performance of the property. You should consult your tax and legal advisors before to verify the validity of our estimates.