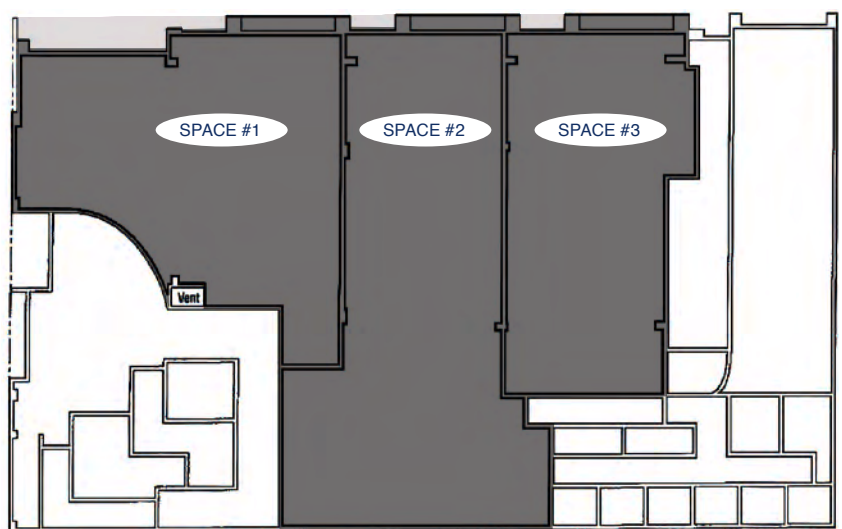




# TERRIFIC CORNER RETAIL SPACE FOR LEASE

2395 LOMBARD, SAN FRANCISCO, CA 94123 – MARINA / COW HOLLOW

**PRICE REDUCED**



**SIZE + PRICE PER SPACE**  
**1,300 SQ FT @ \$3.25 PER SQ FT, NNN – SPACE #1**  
**1,679 SQ FT @ \$2.75 PER SQ FT, NNN – SPACE #2**  
**1,110 SQ FT @ \$2.75 PER SQ FT, NNN – SPACE #3**  
**4,089 SQ FT @ \$2.75 PER SQ FT, NNN – SPACES #1-3 (COMBINED)**

**Newly constructed retail spaces** available for lease as individual units or as combination of two or more spaces  
**Terrific window lining for signage and exposure** on Lombard and Scott Streets  
**Near Chestnut Street** and steps away from many great restaurants and retailers

CALL **JEREMY BLATTEIS**  
EMAIL JFBLATTEIS@BLATTEISREALTY.COM  
DIRECT 415-321-7493  
DRE# 01460566

BLATTEIS REALTY CO., INC.  
44 MONTGOMERY STREET, SUITE 1288  
SAN FRANCISCO, CA 94104  
WWW.SFRETAIL.NET  
FAX 415-981-4986  
DRE# 01421282

This statement with the information it contains, is given with the understanding that all negotiations relating to the purchase, renting or leasing of the property described above shall be conducted through this office. The above information, while not guaranteed, has been secured from sources believed to be reliable. We have not verified its accuracy and make no guarantee, warranty or representation regarding this information and it is published subject to the possibility of errors, omissions, changing of listing information including price, term, financing, or withdrawal without notice. We include projections, estimates, opinions, and/or assumptions, for example only, and they may not represent current or future performance of the property. You should consult your tax and legal advisors before to verify the validity of our estimates.