



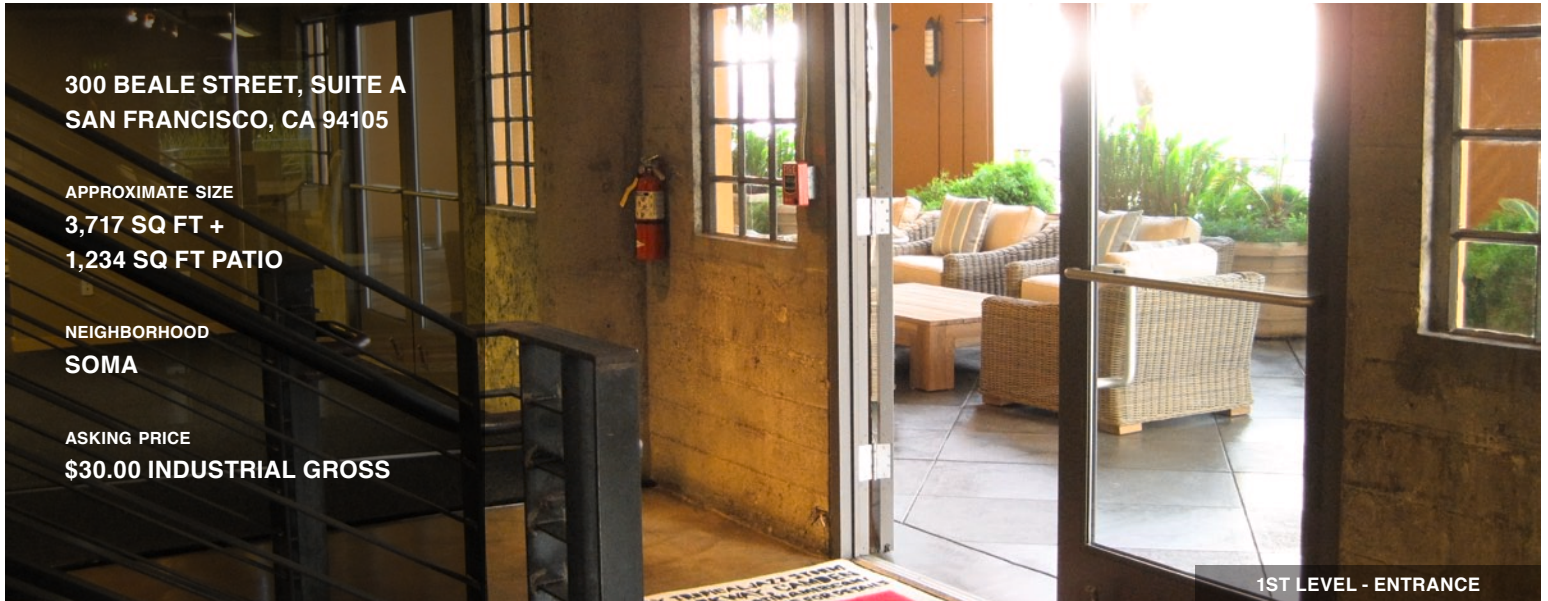
CREATIVE TECH SPACE FOR LEASE

**300 BEALE STREET, SUITE A
SAN FRANCISCO, CA 94105**

**APPROXIMATE SIZE
3,717 SQ FT +
1,234 SQ FT PATIO**

**NEIGHBORHOOD
SOMA**

**ASKING PRICE
\$30.00 INDUSTRIAL GROSS**



1ST LEVEL - ENTRANCE

Two-level garden office space includes private patio and (at no additional charge) roll-down window screens, plants, outdoor heaters, and glass French doors leading into the suite; load factor not included

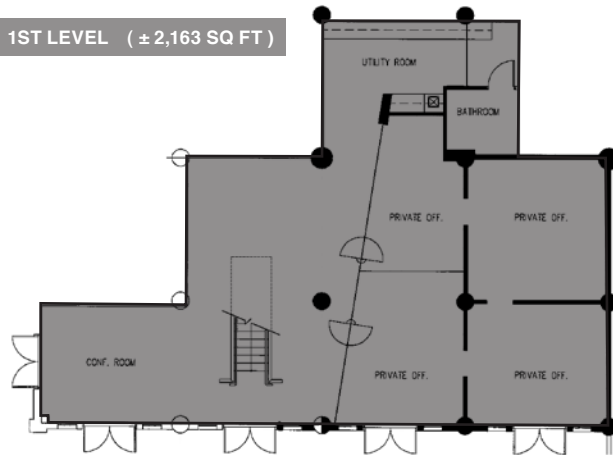
Internal amenities include: two large conference rooms (or private offices), internal staircase, glass-walled open areas (or offices), two bathrooms, and kitchen

May be combined with adjacent Suite D (3,223 square feet)

Nearby parking available underground, in secured surface lot, surface public lots, and ample street parking

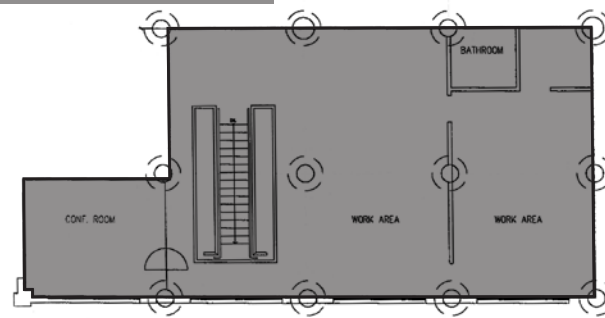
Within a few blocks are MUNI light rail stop, Embarcadero BART station, and many restaurants like Bistro Burger, Specialty's Cafe & Bakery, Palomino

1ST LEVEL (± 2,163 SQ FT)



1ST LEVEL - CONFERENCE ROOM

2ND LEVEL (± 1,554 SQ FT)



2ND LEVEL - WORK AREA



2ND LEVEL - CONFERENCE ROOM

CALL **RICHARD KALES**
EMAIL RKALES@BLATTEISREALTY.COM
DIRECT 415-321-7494
DRE# 00598763

BLATTEIS REALTY CO., INC.
44 MONTGOMERY STREET, SUITE 1288
SAN FRANCISCO, CA 94104
WWW.SFRETAIL.NET
FAX 415-981-4986
DRE# 01421282

This statement with the information it contains, is given with the understanding that all negotiations relating to the purchase, renting or leasing of the property described above shall be conducted through this office. The above information, while not guaranteed, has been secured from sources believed to be reliable. We have not verified its accuracy and make no guarantee, warranty or representation regarding this information and it is published subject to the possibility of errors, omissions, changing of listing information including price, term, financing, or withdrawal without notice. We include projections, estimates, opinions, and/or assumptions, for example only, and they may not represent current or future performance of the property. You should consult your tax and legal advisors before to verify the validity of our estimates.