

FOR LEASE

# 421 Beach Street San Francisco



## Retail storefront in busy Fisherman's Wharf

# ±600 SF

Please Call For Price

**CONTACT David Blatteis**

415-321-7488 | dsb@brsf.co | BRE#:00418305

BLATTEIS REALTY CO. 44 Montgomery Street, Ste. 1288 | t: 415-981-2844 | f: 415-981-4986 | info@brsf.co | BRE#: 01421282 | www.sfretail.net

This statement with the information it contains, is given with the understanding that all negotiations relating to the purchase, renting or leasing of the property described above shall be conducted through this office. The above information, while not guaranteed, has been secured from sources believed to be reliable. We have not verified its accuracy and make no guarantee, warranty or representation regarding this information and it is published subject to the possibility of errors, omissions, changing of listing information including price, term, financing, or withdrawal without notice. We include projections, estimates, opinions, and/or assumptions, for example only, and they may not represent current or future performance of the property. You should consult your tax and legal advisors before to verify the validity of our estimates.



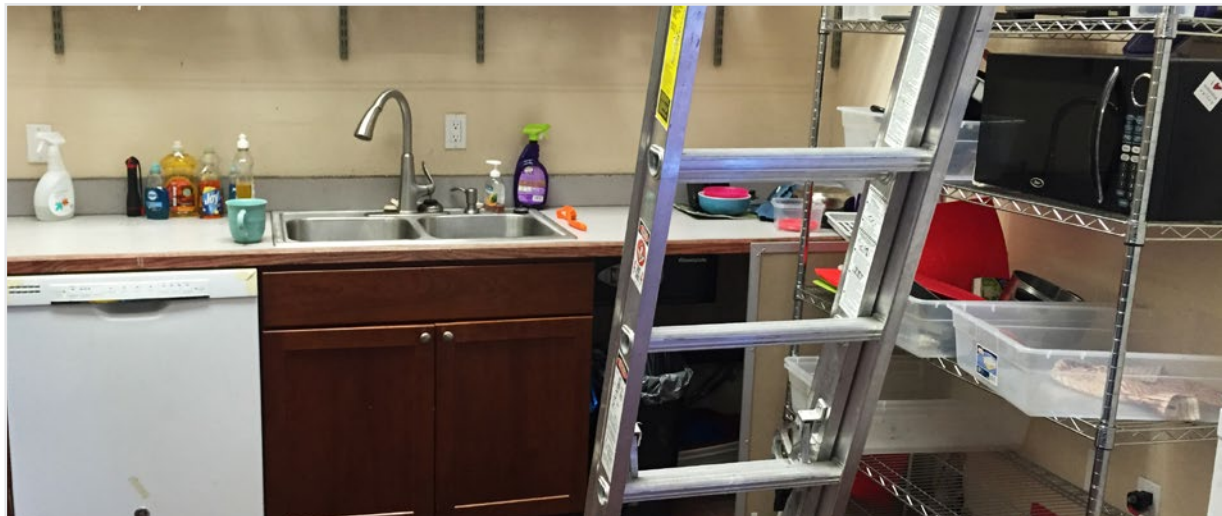
421 BEACH STREET, SAN FRANCISCO

## ABOUT THIS PROPERTY

This retail storefront with small kitchenette (no cooking) is located right in the hustle and bustle of the Fisherman's Wharf. The shops and attractions nearby this property, include: Boudin, It Sugar, Catagnola's, Pier 39, Ripley's Believe It or Not, Joe's Crab Shack, In-and-Out, Brick & Beam, and many, many more! The Fisherman's Wharf is a well known historical site known for it's seafood dining and shopping complexes.

**Available April 1, 2016**

## LOBBY & KITCHENETTE



**CONTACT David Blatteis**

415-321-7488 | [dsb@brsf.co](mailto:dsb@brsf.co) | BRE#:00418305

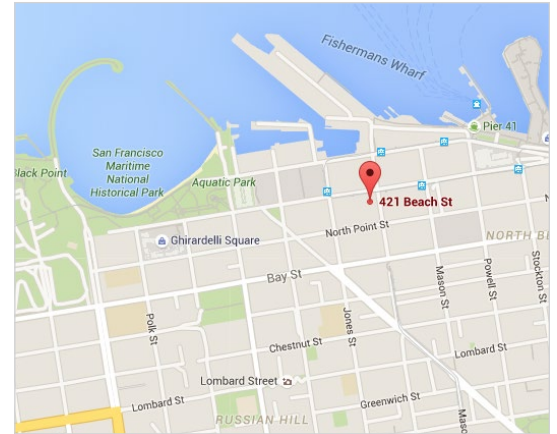
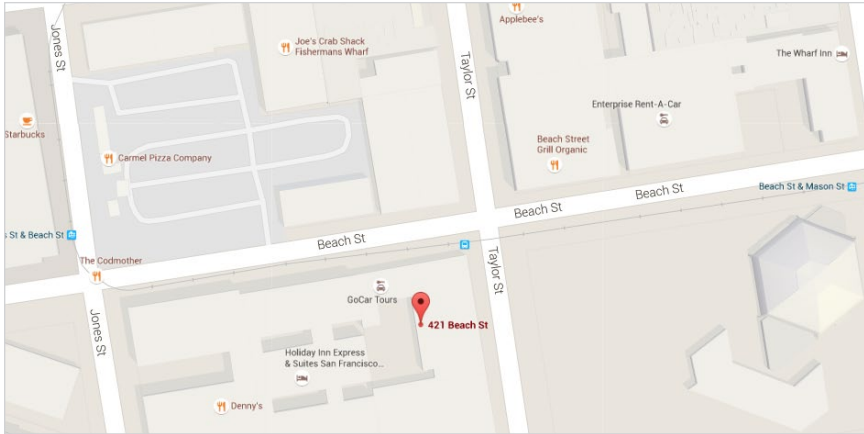
BLATTEIS REALTY CO. 44 Montgomery Street, Ste. 1288 | t: 415-981-2844 | f: 415-981-4986 | [info@brsf.co](mailto:info@brsf.co) | BRE#: 01421282 | [www.sfretail.net](http://www.sfretail.net)

This statement with the information it contains, is given with the understanding that all negotiations relating to the purchase, renting or leasing of the property described above shall be conducted through this office. The above information, while not guaranteed, has been secured from sources believed to be reliable. We have not verified its accuracy and make no guarantee, warranty or representation regarding this information and it is published subject to the possibility of errors, omissions, changing of listing information including price, term, financing, or withdrawal without notice. We include projections, estimates, opinions, and/or assumptions, for example only, and they may not represent current or future performance of the property. You should consult your tax and legal advisors before to verify the validity of our estimates.





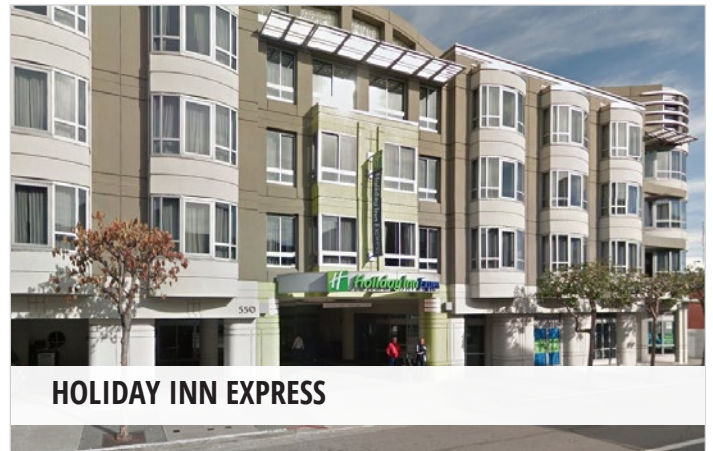
# 421 BEACH STREET, SAN FRANCISCO



## NEARBY



**BOUDIN**



**HOLIDAY INN EXPRESS**



**IT SUGAR**



**PIER 39**

**CONTACT David Blatteis**

415-321-7488 | [dsb@brsf.co](mailto:dsb@brsf.co) | BRE#:00418305

BLATTEIS REALTY CO. 44 Montgomery Street, Ste. 1288 | t: 415-981-2844 | f: 415-981-4986 | [info@brsf.co](mailto:info@brsf.co) | BRE#: 01421282 | [www.sfretail.net](http://www.sfretail.net)

This statement with the information it contains, is given with the understanding that all negotiations relating to the purchase, renting or leasing of the property described above shall be conducted through this office. The above information, while not guaranteed, has been secured from sources believed to be reliable. We have not verified its accuracy and make no guarantee, warranty or representation regarding this information and it is published subject to the possibility of errors, omissions, changing of listing information including price, term, financing, or withdrawal without notice. We include projections, estimates, opinions, and/or assumptions, for example only, and they may not represent current or future performance of the property. You should consult your tax and legal advisors before to verify the validity of our estimates.

