

FOR LEASE

1945 Union Street San Francisco



Retail Space on Electrifying Union Street

± 200 SF

Asking \$2,000/mo.

CONTACT David Blatteis
Sharon Kim

415-321-7488 | db@brsf.co | BRE#:00418305
415-321-7491 | sk@brsf.co | BRE#:01865334

BLATTEIS REALTY CO. 44 Montgomery Street, Ste. 1288 | t: 415-981-2844 | f: 415-981-4986 | info@brsf.co | BRE#: 01421282 | www.sfretail.net

This statement with the information it contains, is given with the understanding that all negotiations relating to the purchase, renting or leasing of the property described above shall be conducted through this office. The above information, while not guaranteed, has been secured from sources believed to be reliable. We have not verified its accuracy and make no guarantee, warranty or representation regarding this information and it is published subject to the possibility of errors, omissions, changing of listing information including price, term, financing, or withdrawal without notice. We include projections, estimates, opinions, and/or assumptions, for example only, and they may not represent current or future performance of the property. You should consult your tax and legal advisors before to verify the validity of our estimates.

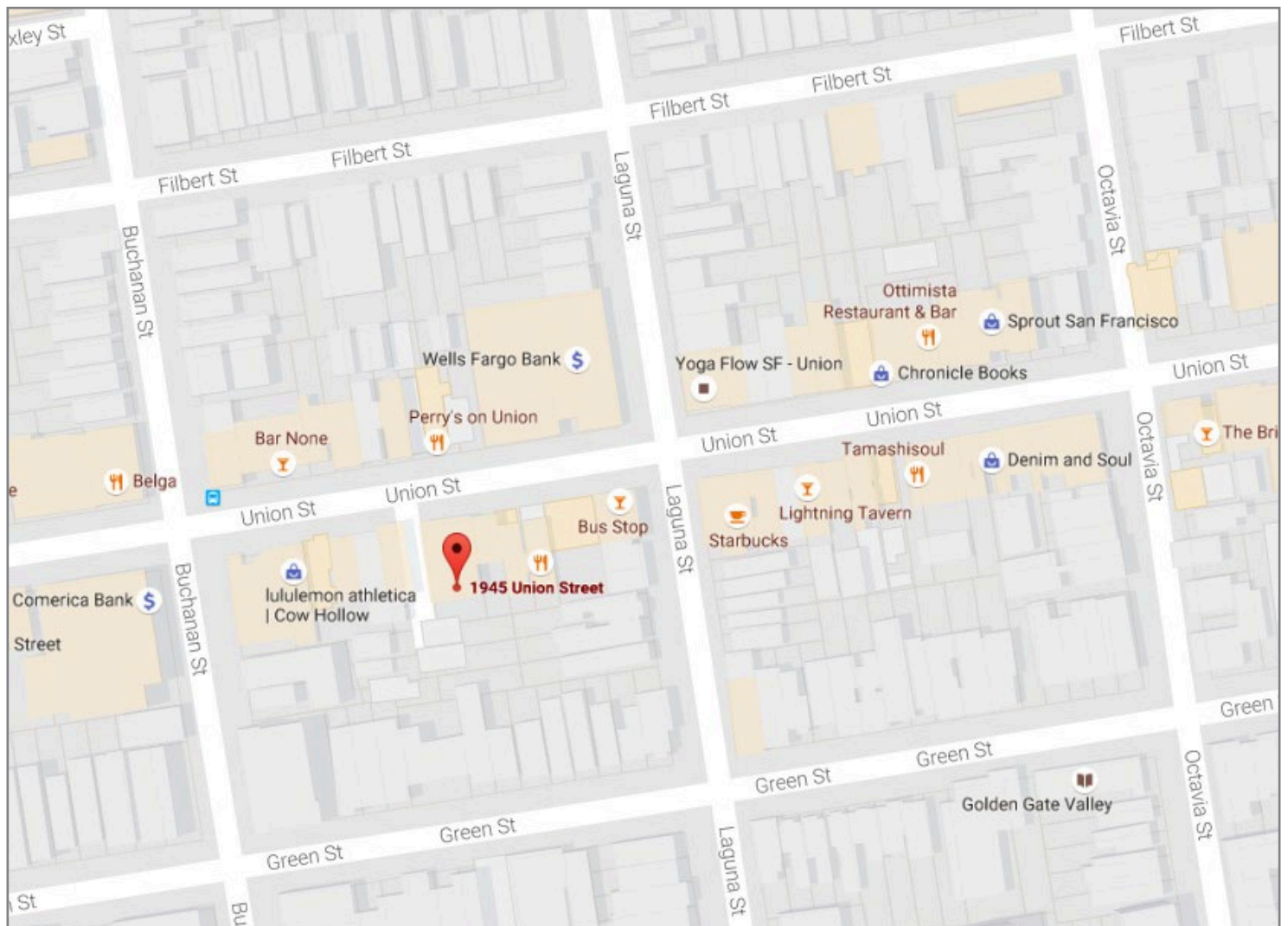


1945 UNION STREET, SAN FRANCISCO CA

ABOUT

This retail shop is located on the electrifying and prominent Union Street. Running parallel to Chestnut Street, Union Street operates as one of the frontrunners of the shopping and dining sections of San Francisco; for both locals and tourists. Public parking available across the street. Establishments nearby include: Lorna Jane, Nike, Soulcycle, Denim and Soul, Perry's, Lush, Yoga Flow, Equinox, and many more.

MAP



CONTACT David Blatteis
Sharon Kim

415-321-7488 | db@brsf.co | BRE#:00418305
415-321-7491 | sk@brsf.co | BRE#:01865334

BLATTEIS REALTY CO. 44 Montgomery Street, Ste. 1288 | t: 415-981-2844 | f: 415-981-4986 | info@brsf.co | BRE#: 01421282 | www.sfretail.net

This statement with the information it contains, is given with the understanding that all negotiations relating to the purchase, renting or leasing of the property described above shall be conducted through this office. The above information, while not guaranteed, has been secured from sources believed to be reliable. We have not verified its accuracy and make no guarantee, warranty or representation regarding this information and it is published subject to the possibility of errors, omissions, changing of listing information including price, term, financing, or withdrawal without notice. We include projections, estimates, opinions, and/or assumptions, for example only, and they may not represent current or future performance of the property. You should consult your tax and legal advisors before to verify the validity of our estimates.

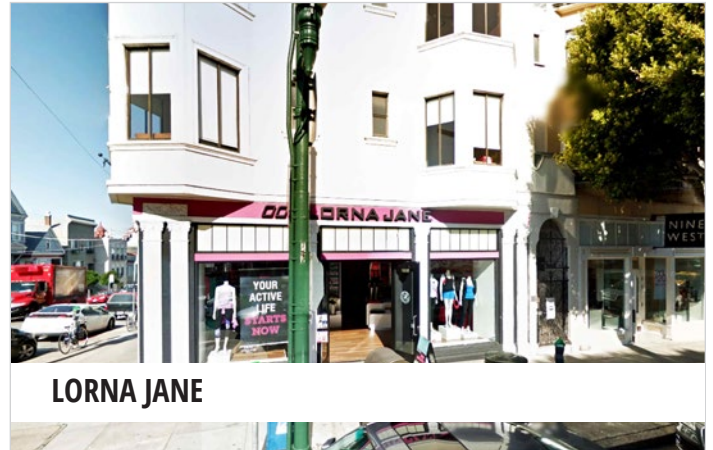


1945 UNION STREET, SAN FRANCISCO CA

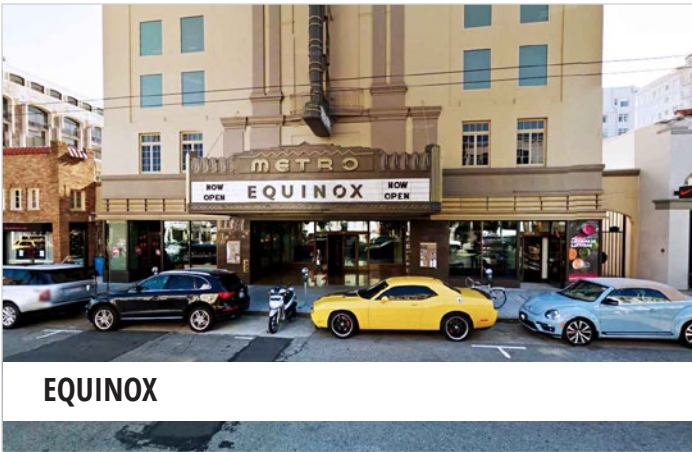
NEARBY



SOUL CYCLE



LORNA JANE



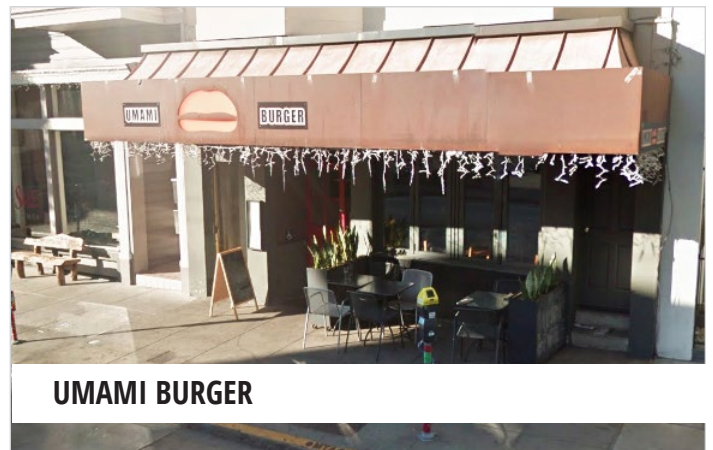
EQUINOX



SEPHORA



LULUMELON



UMAMI BURGER

CONTACT David Blatteis
Sharon Kim

415-321-7488 | db@brsf.co | BRE#:00418305
415-321-7491 | sk@brsf.co | BRE#:01865334

BLATTEIS REALTY CO. 44 Montgomery Street, Ste. 1288 | t: 415-981-2844 | f: 415-981-4986 | info@brsf.co | BRE#: 01421282 | www.sfretail.net

This statement with the information it contains, is given with the understanding that all negotiations relating to the purchase, renting or leasing of the property described above shall be conducted through this office. The above information, while not guaranteed, has been secured from sources believed to be reliable. We have not verified its accuracy and make no guarantee, warranty or representation regarding this information and it is published subject to the possibility of errors, omissions, changing of listing information including price, term, financing, or withdrawal without notice. We include projections, estimates, opinions, and/or assumptions, for example only, and they may not represent current or future performance of the property. You should consult your tax and legal advisors before to verify the validity of our estimates.

