

FOR LEASE

# 3848 24th Street San Francisco



## Highly Visible Corner Store Front!

# ± 925 SF \$6,475/mo.

**CONTACT** Ryan Abel  
David Blatteis

415-321-7497 | ra@brsf.co | BRE#:01465094  
415-321-7488 | db@brsf.co | BRE#:00418305

BLATTEIS REALTY CO. 44 Montgomery Street, Ste. 1288 | t: 415-981-2844 | f: 415-981-4986 | info@brsf.co | BRE#: 01421282 | www.sfretail.net

This statement with the information it contains, is given with the understanding that all negotiations relating to the purchase, renting or leasing of the property described above shall be conducted through this office. The above information, while not guaranteed, has been secured from sources believed to be reliable. We have not verified its accuracy and make no guarantee, warranty or representation regarding this information and it is published subject to the possibility of errors, omissions, changing of listing information including price, term, financing, or withdrawal without notice. We include projections, estimates, opinions, and/or assumptions, for example only, and they may not represent current or future performance of the property. You should consult your tax and legal advisors before to verify the validity of our estimates.



3848 24TH STREET, SAN FRANCISCO CA

## INTERIOR



**CONTACT** Ryan Abel  
David Blatteis

415-321-7497 | ra@brsf.co | BRE#:01465094  
415-321-7488 | db@brsf.co | BRE#:00418305

BLATTEIS REALTY CO. 44 Montgomery Street, Ste. 1288 | t: 415-981-2844 | f: 415-981-4986 | info@brsf.co | BRE#: 01421282 | www.sfretail.net

This statement with the information it contains, is given with the understanding that all negotiations relating to the purchase, renting or leasing of the property described above shall be conducted through this office. The above information, while not guaranteed, has been secured from sources believed to be reliable. We have not verified its accuracy and make no guarantee, warranty or representation regarding this information and it is published subject to the possibility of errors, omissions, changing of listing information including price, term, financing, or withdrawal without notice. We include projections, estimates, opinions, and/or assumptions, for example only, and they may not represent current or future performance of the property. You should consult your tax and legal advisors before to verify the validity of our estimates.



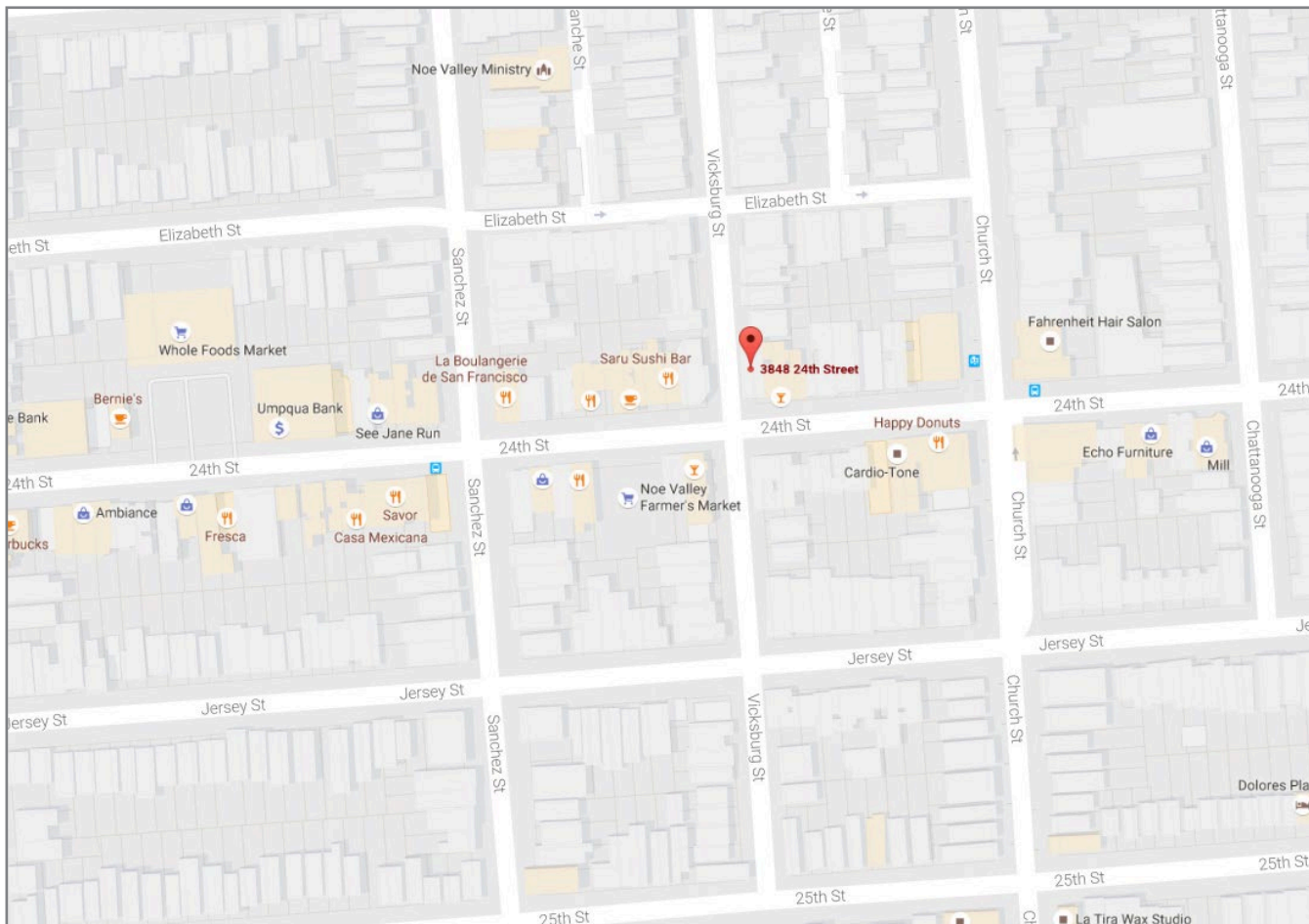


# 3848 24TH STREET, SAN FRANCISCO CA

## ABOUT

Highly visible corner store front in the heart of Noe Valley. Additional garage/storage available. Store is newly remodeled with ADA compliant bathroom, with updated electrical and plumbing. Businesses nearby include: Happy Donut, Whole Foods Market, Olive This Olive That, Haystack Pizza, La Boulangerie de San Francisco, See Jane Run, and many more.

## MAP



**CONTACT** **Ryan Abel**  
**David Blatteis**

415-321-7497 | [ra@brsf.co](mailto:ra@brsf.co) | BRE#:01465094  
415-321-7488 | [db@brsf.co](mailto:db@brsf.co) | BRE#:00418305

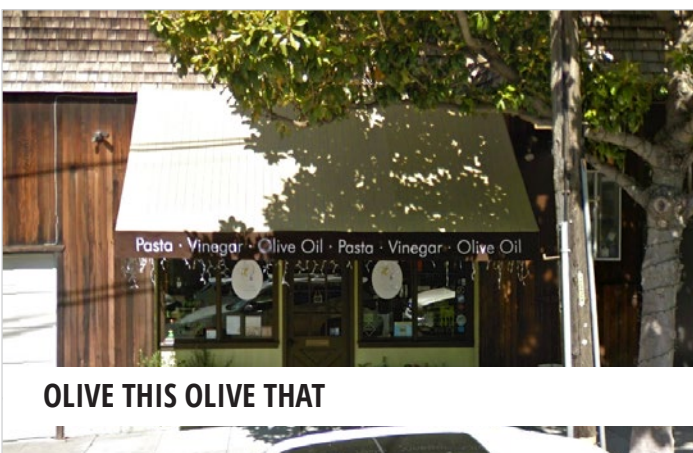
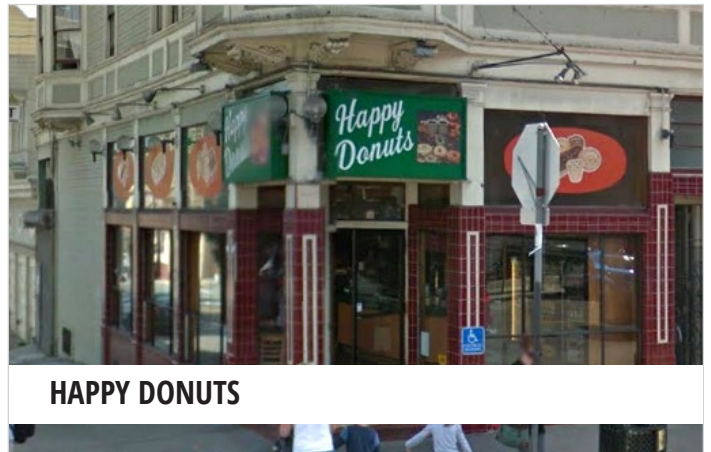
BLATTEIS REALTY CO. 44 Montgomery Street, Ste. 1288 | t: 415-981-2844 | f: 415-981-4986 | [info@brsf.co](mailto:info@brsf.co) | BRE#: 01421282 | [www.sfretail.net](http://www.sfretail.net)

This statement with the information it contains, is given with the understanding that all negotiations relating to the purchase, renting or leasing of the property described above shall be conducted through this office. The above information, while not guaranteed, has been secured from sources believed to be reliable. We have not verified its accuracy and make no guarantee, warranty or representation regarding this information and it is published subject to the possibility of errors, omissions, changing of listing information including price, term, financing, or withdrawal without notice. We include projections, estimates, opinions, and/or assumptions, for example only, and they may not represent current or future performance of the property. You should consult your tax and legal advisors before to verify the validity of our estimates.



3848 24TH STREET, SAN FRANCISCO CA

NEARBY



**CONTACT** Ryan Abel  
David Blatteis

415-321-7497 | ra@brsf.co | BRE#:01465094  
415-321-7488 | db@brsf.co | BRE#:00418305

BLATTEIS REALTY CO. 44 Montgomery Street, Ste. 1288 | t: 415-981-2844 | f: 415-981-4986 | info@brsf.co | BRE#: 01421282 | www.sfretail.net

This statement with the information it contains, is given with the understanding that all negotiations relating to the purchase, renting or leasing of the property described above shall be conducted through this office. The above information, while not guaranteed, has been secured from sources believed to be reliable. We have not verified its accuracy and make no guarantee, warranty or representation regarding this information and it is published subject to the possibility of errors, omissions, changing of listing information including price, term, financing, or withdrawal without notice. We include projections, estimates, opinions, and/or assumptions, for example only, and they may not represent current or future performance of the property. You should consult your tax and legal advisors before to verify the validity of our estimates.

