

FOR LEASE

# 155 Jefferson Street San Francisco



## Fisherman's Wharf Retail For Lease!

**± 1,100 SF** Please Call for Price

**CONTACT** David Blatteis  
Jeremy Blatteis

415-321-7488 | db@brsf.co | BRE#:00418305  
415-321-7491 | jfb@brsf.co | BRE#:01460566

BLATTEIS REALTY CO. 44 Montgomery Street, Ste. 1288 | t: 415-981-2844 | f: 415-981-4986 | info@brsf.co | BRE#: 01421282 | www.sfretail.net

This statement with the information it contains, is given with the understanding that all negotiations relating to the purchase, renting or leasing of the property described above shall be conducted through this office. The above information, while not guaranteed, has been secured from sources believed to be reliable. We have not verified its accuracy and make no guarantee, warranty or representation regarding this information and it is published subject to the possibility of errors, omissions, changing of listing information including price, term, financing, or withdrawal without notice. We include projections, estimates, opinions, and/or assumptions, for example only, and they may not represent current or future performance of the property. You should consult your tax and legal advisors before to verify the validity of our estimates.





155 JEFFERSON STREET, SAN FRANCISCO

INTERIOR  
PHOTOS



**CONTACT** David Blatteis  
Jeremy Blatteis

415-321-7488 | db@brsf.co | BRE#:00418305

415-321-7491 | jfb@brsf.co | BRE#:01460566

BLATTEIS REALTY CO. 44 Montgomery Street, Ste. 1288 | t: 415-981-2844 | f: 415-981-4986 | info@brsf.co | BRE#: 01421282 | www.sfretail.net

This statement with the information it contains, is given with the understanding that all negotiations relating to the purchase, renting or leasing of the property described above shall be conducted through this office. The above information, while not guaranteed, has been secured from sources believed to be reliable. We have not verified its accuracy and make no guarantee, warranty or representation regarding this information and it is published subject to the possibility of errors, omissions, changing of listing information including price, term, financing, or withdrawal without notice. We include projections, estimates, opinions, and/or assumptions, for example only, and they may not represent current or future performance of the property. You should consult your tax and legal advisors before to verify the validity of our estimates.



# 155 JEFFERSON STREET, SAN FRANCISCO

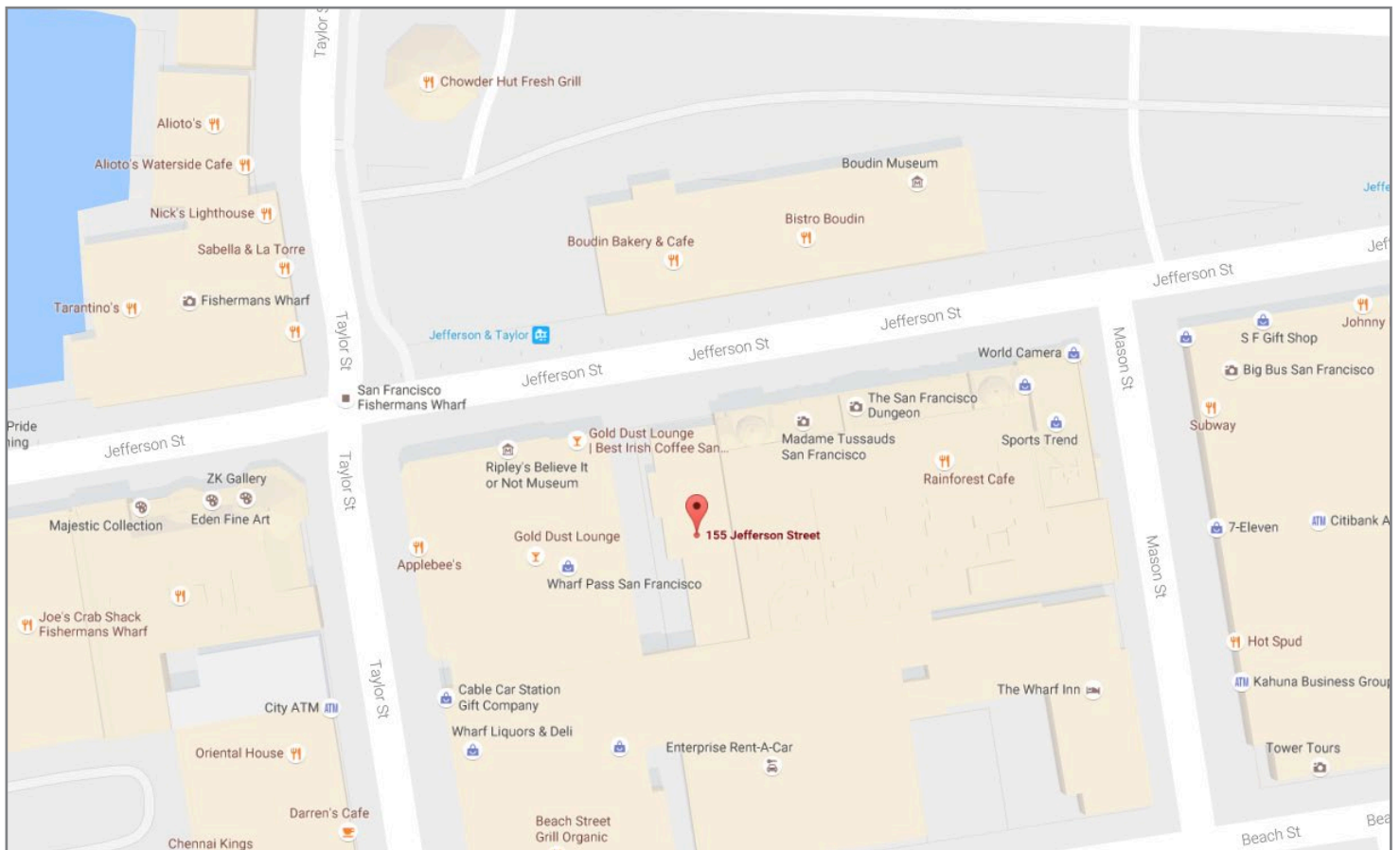
## ABOUT

Ground-floor retail for lease on the best block of Fisherman's Wharf.

Prime location in a popular neighborhood and just steps away from a great mix of tenants: Ripley's Believe It or Not Museum, Wax Museum, Rainforest Cafe, McDonald's, Alioto's, Musee Mecanique, Boudin's Bistro, Bakery, and Museum, and several major hotels.

Also nearby are some of San Francisco's most famous landmarks — Pier 39, Del Monte Cannery, Ghirardelli Square, Aquatic Park, Northpoint Shopping Centre, and the historic Muni F-line.

## MAP



**CONTACT** David Blatteis  
Jeremy Blatteis

415-321-7488 | db@brsf.co | BRE#:00418305  
415-321-7491 | jfb@brsf.co | BRE#:01460566

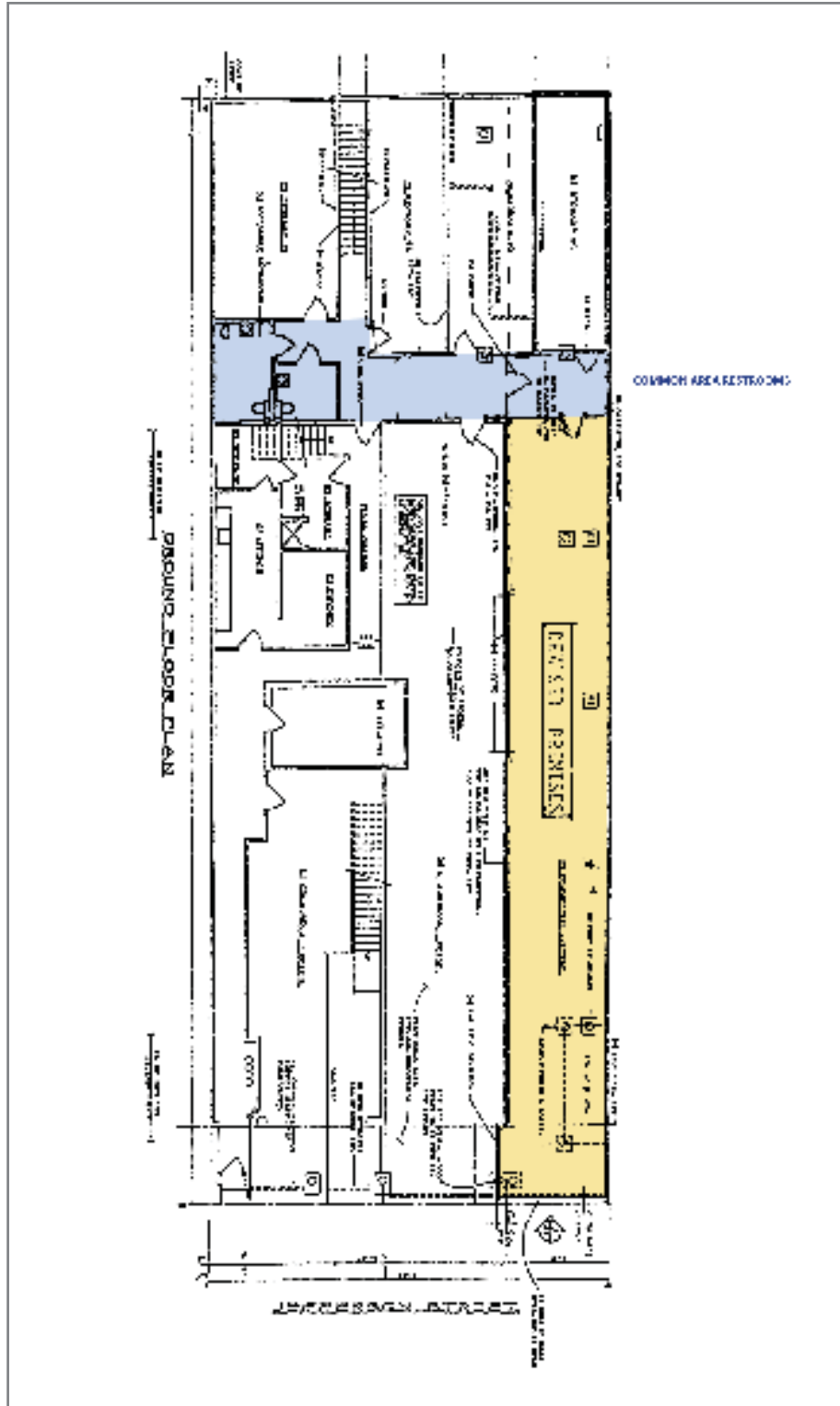
BLATTEIS REALTY CO. 44 Montgomery Street, Ste. 1288 | t: 415-981-2844 | f: 415-981-4986 | info@brsf.co | BRE#: 01421282 | www.sfretail.net

This statement with the information it contains, is given with the understanding that all negotiations relating to the purchase, renting or leasing of the property described above shall be conducted through this office. The above information, while not guaranteed, has been secured from sources believed to be reliable. We have not verified its accuracy and make no guarantee, warranty or representation regarding this information and it is published subject to the possibility of errors, omissions, changing of listing information including price, term, financing, or withdrawal without notice. We include projections, estimates, opinions, and/or assumptions, for example only, and they may not represent current or future performance of the property. You should consult your tax and legal advisors before to verify the validity of our estimates.



# 155 JEFFERSON STREET, SAN FRANCISCO

## FLOORPLAN



**CONTACT** David Blatteis  
Jeremy Blatteis

415-321-7488 | db@brsf.co | BRE#:00418305

415-321-7491 | jfb@brsf.co | BRE#:01460566

BLATTEIS REALTY CO. 44 Montgomery Street, Ste. 1288 | t: 415-981-2844 | f: 415-981-4986 | info@brsf.co | BRE#: 01421282 | www.sfretail.net

This statement with the information it contains, is given with the understanding that all negotiations relating to the purchase, renting or leasing of the property described above shall be conducted through this office. The above information, while not guaranteed, has been secured from sources believed to be reliable. We have not verified its accuracy and make no guarantee, warranty or representation regarding this information and it is published subject to the possibility of errors, omissions, changing of listing information including price, term, financing, or withdrawal without notice. We include projections, estimates, opinions, and/or assumptions, for example only, and they may not represent current or future performance of the property. You should consult your tax and legal advisors before to verify the validity of our estimates.

