

FOR LEASE

# 3222 Geary Blvd. San Francisco



## ± 2,000 SF

Please Call for Price

**CONTACT** Kevin Velotta  
David Blatteis

415-321-7496 | kv@brsf.co | BRE#: 01945129  
415-321-7488 | db@brsf.co | BRE#: 00418305

BLATTEIS REALTY CO. 44 Montgomery Street, Ste. 1288 | t: 415-981-2844 | f: 415-981-4986 | info@brsf.co | BRE#: 01421282 | www.sfretail.net

This statement with the information it contains, is given with the understanding that all negotiations relating to the purchase, renting or leasing of the property described above shall be conducted through this office. The above information, while not guaranteed, has been secured from sources believed to be reliable. We have not verified its accuracy and make no guarantee, warranty or representation regarding this information and it is published subject to the possibility of errors, omissions, changing of listing information including price, term, financing, or withdrawal without notice. We include projections, estimates, opinions, and/or assumptions, for example only, and they may not represent current or future performance of the property. You should consult your tax and legal advisors before to verify the validity of our estimates.

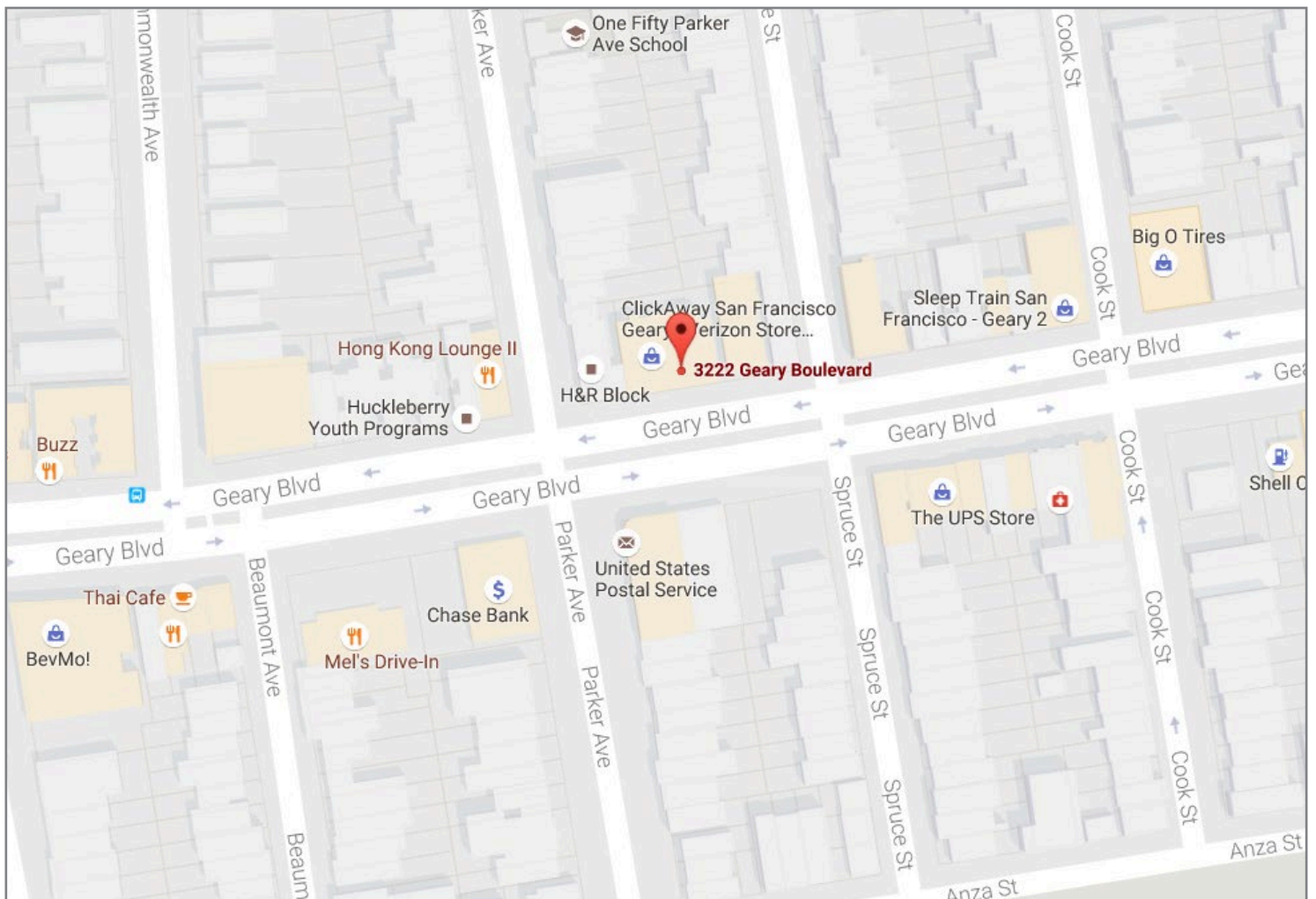


# 3222 GEARY BOULEVARD , SAN FRANCISCO CA

## ABOUT

Approximately ±2,000 sf ground floor retail/office space available now in Laurel Heights. This neighborhood is home to many lively shops and attractions including: US Post Office, H & R Block, Carpet Connection, BevMo, Mel's Drive-in, University of San Francisco, and City Target.

## MAPS



**CONTACT** **Kevin Velotta**  
**David Blatteis**

415-321-7496 | kv@brsf.co | BRE#: 01945129  
415-321-7488 | db@brsf.co | BRE#: 00418305

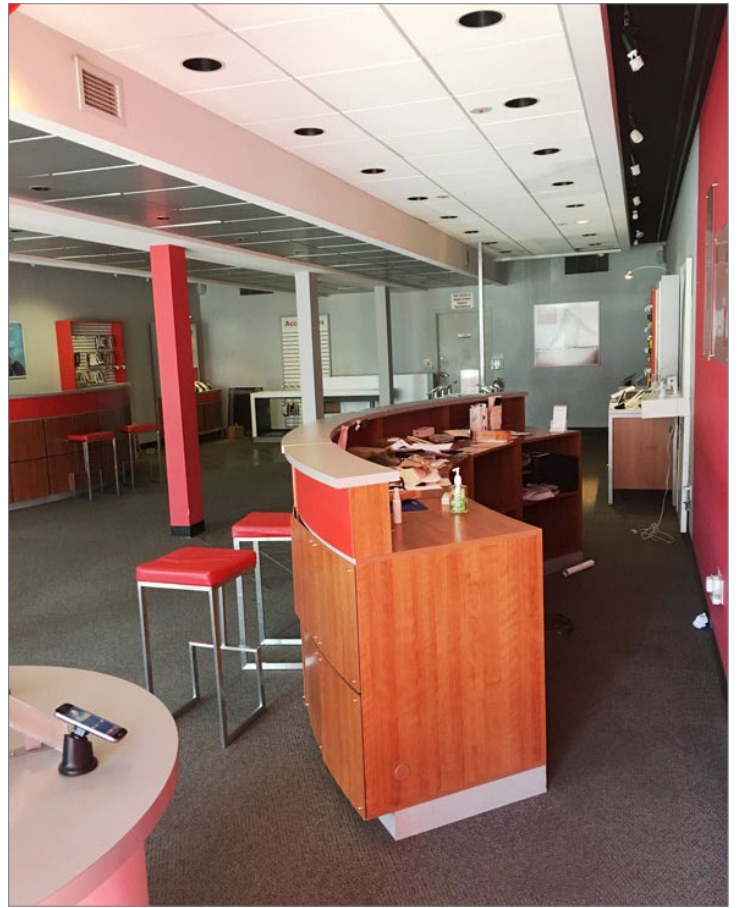
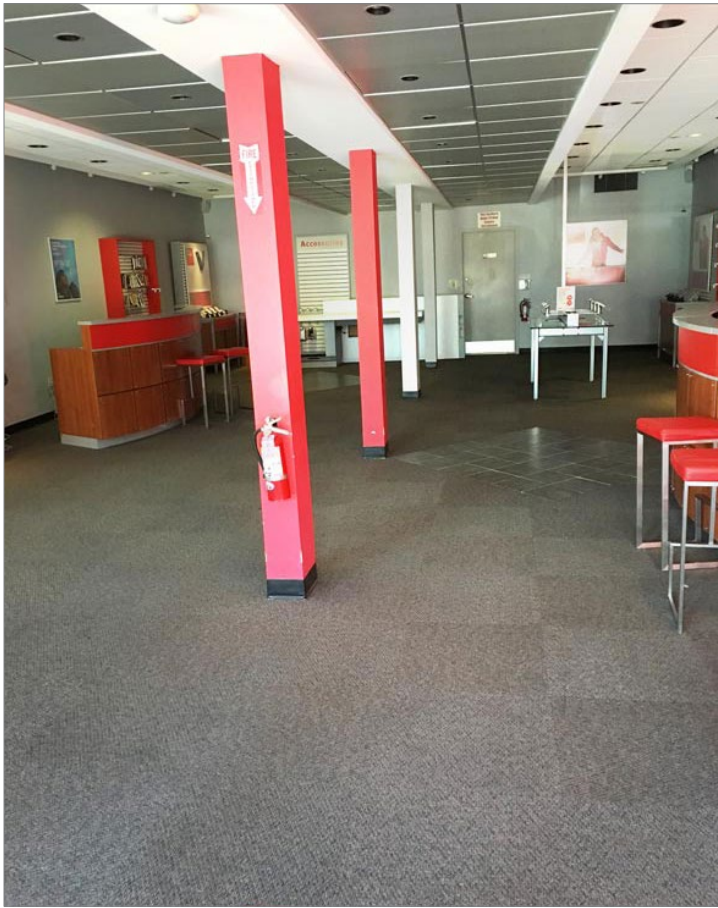
BLATTEIS REALTY CO. 44 Montgomery Street, Ste. 1288 | t: 415-981-2844 | f: 415-981-4986 | info@brsf.co | BRE#: 01421282 | www.sfretail.net

This statement with the information it contains, is given with the understanding that all negotiations relating to the purchase, renting or leasing of the property described above shall be conducted through this office. The above information, while not guaranteed, has been secured from sources believed to be reliable. We have not verified its accuracy and make no guarantee, warranty or representation regarding this information and it is published subject to the possibility of errors, omissions, changing of listing information including price, term, financing, or withdrawal without notice. We include projections, estimates, opinions, and/or assumptions, for example only, and they may not represent current or future performance of the property. You should consult your tax and legal advisors before to verify the validity of our estimates.





# 3222 GEARY BOULEVARD , SAN FRANCISCO CA



**CONTACT** **Kevin Velotta**  
**David Blatteis**

415-321-7496 | kv@brsf.co | BRE#: 01945129  
415-321-7488 | db@brsf.co | BRE#: 00418305

BLATTEIS REALTY CO. 44 Montgomery Street, Ste. 1288 | t: 415-981-2844 | f: 415-981-4986 | info@brsf.co | BRE#: 01421282 | www.sfretail.net

This statement with the information it contains, is given with the understanding that all negotiations relating to the purchase, renting or leasing of the property described above shall be conducted through this office. The above information, while not guaranteed, has been secured from sources believed to be reliable. We have not verified its accuracy and make no guarantee, warranty or representation regarding this information and it is published subject to the possibility of errors, omissions, changing of listing information including price, term, financing, or withdrawal without notice. We include projections, estimates, opinions, and/or assumptions, for example only, and they may not represent current or future performance of the property. You should consult your tax and legal advisors before to verify the validity of our estimates.

