

AVAILABLE

# 2201 Union Street

San Francisco, CA



**Lively Corner Retail at Union & Fillmore Streets**

**±800 SF**

**Please Call for Price**

**PLEASE DO NOT DISTURB TENANT**

**CONTACT** **Jeremy Blatteis** 415-321-7493 | [jfb@brsf.co](mailto:jfb@brsf.co) | BRE#: 01460566

BLATTEIS REALTY CO. 44 Montgomery Street, Ste. 1288 | t: 415-981-2844 | f: 415-981-4986 | [info@brsf.co](mailto:info@brsf.co) | BRE#: 01421282 | [www.sfretail.net](http://www.sfretail.net)

This statement with the information it contains, is given with the understanding that all negotiations relating to the purchase, renting or leasing of the property described above shall be conducted through this office. The above information, while not guaranteed, has been secured from sources believed to be reliable. We have not verified its accuracy and make no guarantee, warranty or representation regarding this information and it is published subject to the possibility of errors, omissions, changing of listing information including price, term, financing, or withdrawal without notice. We include projections, estimates, opinions, and/or assumptions, for example only, and they may not represent current or future performance of the property. You should consult your tax and legal advisors before to verify the validity of our estimates.



# 2201 Union Street, San Francisco

Cow Hollow District corner at Union and Fillmore Streets. Strong potential for food and retail. High traffic (vehicular/foot) and excellent visibility and window frontage! Nearby tenants include: Lush, Bike, Jo Malone London, Sephora, Perry's Restaurant, Lorna Jane, and many others.

## EXTERIOR PHOTOS



**CONTACT** **Jeremy Blatteis** 415-321-7493 | [jfb@brsf.co](mailto:jfb@brsf.co) | BRE#: 01460566

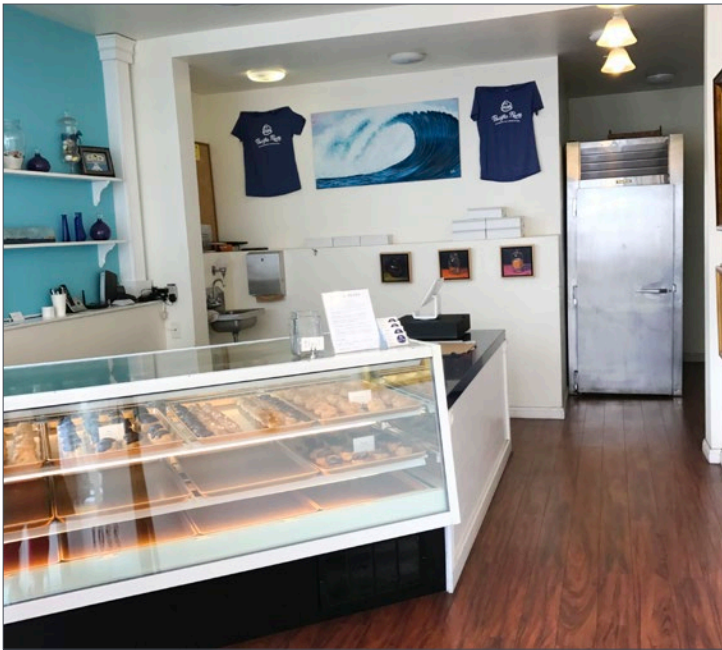
BLATTEIS REALTY CO. 44 Montgomery Street, Ste. 1288 | t: 415-981-2844 | f: 415-981-4986 | [info@brsf.co](mailto:info@brsf.co) | BRE#: 01421282 | [www.sfretail.net](http://www.sfretail.net)

This statement with the information it contains, is given with the understanding that all negotiations relating to the purchase, renting or leasing of the property described above shall be conducted through this office. The above information, while not guaranteed, has been secured from sources believed to be reliable. We have not verified its accuracy and make no guarantee, warranty or representation regarding this information and it is published subject to the possibility of errors, omissions, changing of listing information including price, term, financing, or withdrawal without notice. We include projections, estimates, opinions, and/or assumptions, for example only, and they may not represent current or future performance of the property. You should consult your tax and legal advisors before to verify the validity of our estimates.

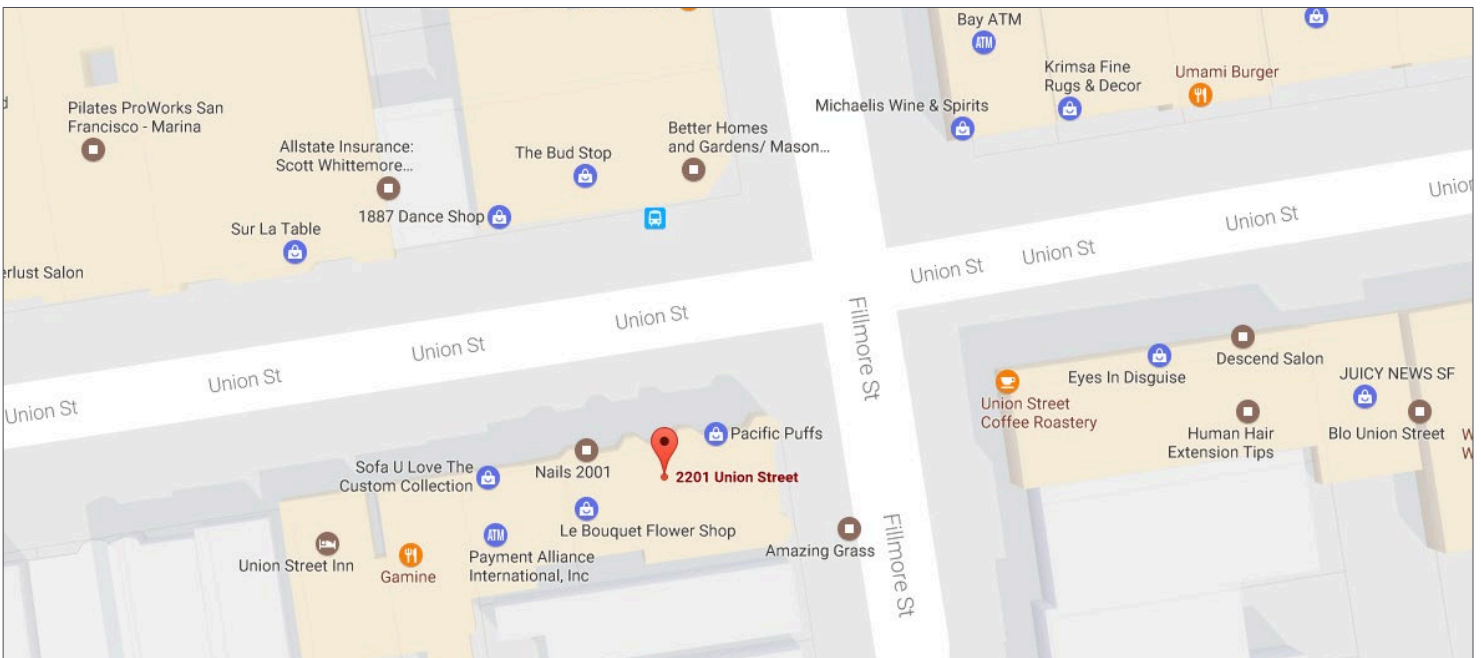


2201 Union Street, San Francisco

INTERIOR PHOTOS



AREA MAP



**CONTACT** **Jeremy Blatteis** 415-321-7493 | [jfb@brsf.co](mailto:jfb@brsf.co) | BRE#: 01460566

BLATTEIS REALTY CO. 44 Montgomery Street, Ste. 1288 | t: 415-981-2844 | f: 415-981-4986 | [info@brsf.co](mailto:info@brsf.co) | BRE#: 01421282 | [www.sfretail.net](http://www.sfretail.net)

This statement with the information it contains, is given with the understanding that all negotiations relating to the purchase, renting or leasing of the property described above shall be conducted through this office. The above information, while not guaranteed, has been secured from sources believed to be reliable. We have not verified its accuracy and make no guarantee, warranty or representation regarding this information and it is published subject to the possibility of errors, omissions, changing of listing information including price, term, financing, or withdrawal without notice. We include projections, estimates, opinions, and/or assumptions, for example only, and they may not represent current or future performance of the property. You should consult your tax and legal advisors before to verify the validity of our estimates.

