



**330** 5TH STREET  
SAN FRANCISCO, CA 94116 | SOMA DISTRICT

**PRIME LOCATION WITHIN BUSTLING  
SOMA DISTRICT. SUITABLE FOR  
RETAIL/RESTAURANT.**

**CALL FOR PRICE**

**NEIGHBORHOOD:** SOMA DISTRICT  
CORNER OF 5TH & SHIPLEY STREETS

**SIZE:**

**±1,710 SF**

**RETAIL/RESTAURANT SPACE FOR LEASE**

**NOW AVAILABLE FOR LEASE!**  
**CENTRALLY LOCATED IN  
SAN FRANCISCO'S ECLECTIC SOMA DISTRICT**

The pedestrian-oriented location offers heavy foot and vehicular traffic day and night from local residents and area workforce. The rapidly changing and Industrial Chic neighborhood is filled with a mix of hip bars, clubs, restaurants, specialty coffee cafés, mid- to high-rise luxury living developments and some of the world's top tech & digital media corporations.

- Great Visibility!
- Includes Type 1 Hood
- One block from busy I-80 5th Street off-ramp
- Previously occupied by a grocery/beer & liquor convenience store



INCORPORATED | EST. 1922

This Statement with the information it contains is given with the understanding that all negotiations relating to the purchase, renting or leasing of the property described above shall be conducted through Blatteis Realty Company. The above information, while not guaranteed, has been secured from sources believed to be reliable. Blatteis Realty has not verified its accuracy and make no guarantees, warranty or representation regarding this information and it is published subject to the possibility of errors, omissions, changes of listing information including price, term, financing, or withdrawal without notice. We include projections, estimates, opinions and/or assumptions, for example only, and they may not represent current or future performance of the property. You should consult your tax and legal advisors before to verify the validity of estimates.

44 Montgomery Suite 1288, San Francisco, CA 94104 | t: 415.981.2844 | f: 415.981.4986 | info@brsf.co | DRE #01421282

**LUCIA J. YOON**

415.321.7485 | ly@brsf.co | DRE #01901890

**JEREMY BLATTEIS**

415.321.7493 | jfb@brsf.co | DRE #01460566

**sfretail.net**



## PROPERTY PHOTOS



**±1,710 SF**  
RETAIL/RESTAURANT SPACE FOR LEASE



INCORPORATED | EST. 1922

This Statement with the information it contains is given with the understanding that all negotiations relating to the purchase, renting or leasing of the property described above shall be conducted through Blatteis Realty Company. The above information, while not guaranteed, has been secured from sources believed to be reliable. Blatteis Realty has not verified its accuracy and make no guarantees, warranty or representation regarding this information and it is published subject to the possibility of errors, omissions, changes of listing information including price, term, financing, or withdrawal without notice. We include projections, estimates, opinions and/or assumptions, for example only, and they may not represent current or future performance of the property. You should consult your tax and legal advisors before to verify the validity of estimates.

**LUCIA J. YOON**

415.321.7485 | ly@brsf.co | DRE #01901890

**JEREMY BLATTEIS**

415.321.7493 | jfb@brsf.co | DRE #01460566

**sfretail.net**



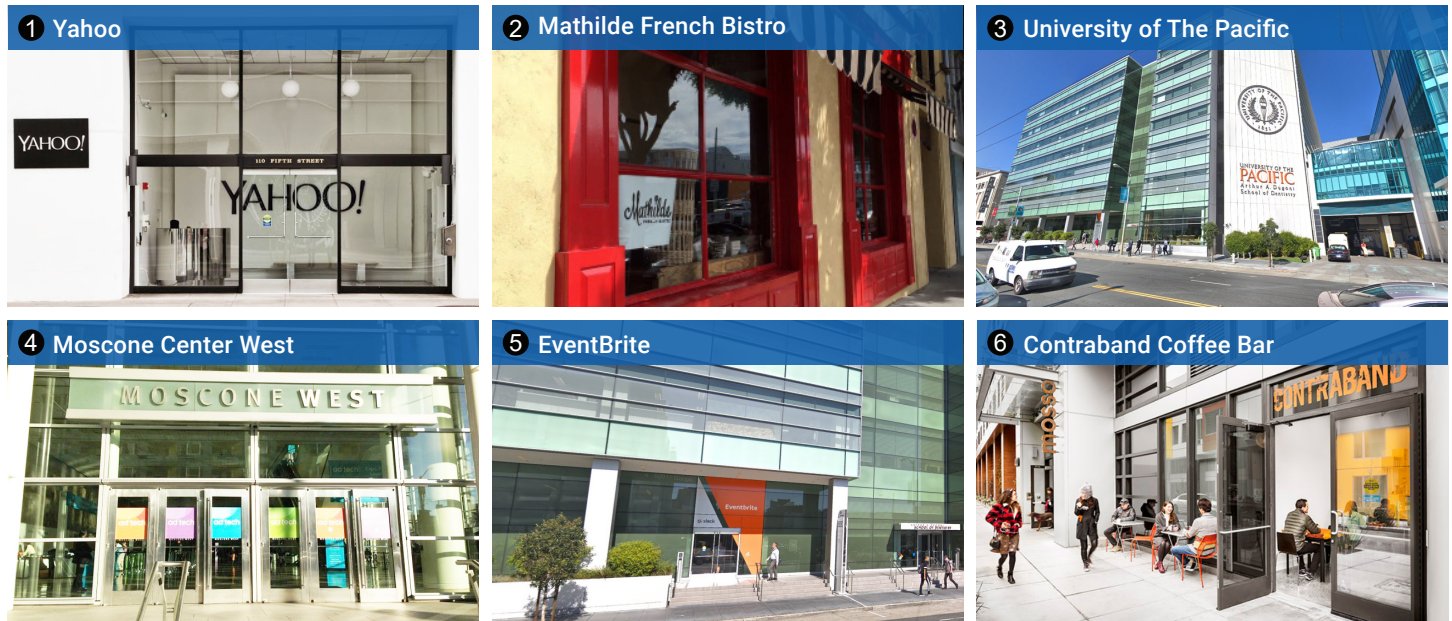
**330 5TH STREET**  
SAN FRANCISCO, CA 94116 | SOMA DISTRICT

**PRIME LOCATION WITHIN BUSTLING SOMA DISTRICT. SUITABLE FOR RETAIL/RESTAURANT.**



**POPULAR NEARBY TENANTS**

Popular Nearby Tenants



INCORPORATED | EST. 1922

This Statement with the information it contains is given with the understanding that all negotiations relating to the purchase, renting or leasing of the property described above shall be conducted through Blatteis Realty Company. The above information, while not guaranteed, has been secured from sources believed to be reliable. Blatteis Realty has not verified its accuracy and make no guarantees, warranty or representation regarding this information and it is published subject to the possibility of errors, omissions, changes of listing information including price, term, financing, or withdrawal without notice. We include projections, estimates, opinions and/or assumptions, for example only, and they may not represent current or future performance of the property. You should consult your tax and legal advisors before to verify the validity of estimates.

44 Montgomery Suite 1288, San Francisco, CA 94104 | t: 415.981.2844 | f: 415.981.4986 | info@brsf.co | DRE #01421282

**LUCIA J. YOON**  
415.321.7485 | ly@brsf.co | DRE #01901890  
**JEREMY BLATTEIS**  
415.321.7493 | jfb@brsf.co | DRE #01460566  
**sftretail.net**