

**PRIME LOCATION!**



**4110** 24TH STREET  
SAN FRANCISCO, CA 94114

CONTEMPORARY GROUND FLOOR BOUTIQUE  
INCLUDES COLORFUL SHOWROOM, PRIVATE  
OFFICE & SHARED GARDEN

**PRICE: \$3,600 Per Month**

**NET CHARGES: Yes**

**NOE VALLEY DISTRICT**

CROSS STREET: CASTRO STREET

SIZE

**±850 SF**

RETAIL/OFFICE SPACE FOR LEASE

**NOW AVAILABLE FOR LEASE**

Noe Valley is considered one of San Francisco's most popular affluent and picturesque upscale residential neighborhoods. 24th Street is the heart of its vibrant shopping village comprised of a trendy mix of highly-rated bar & restaurants, local artisanal shops, health & beauty salons and more!

**ADDITIONAL FEATURES**

- Colorful décor and warm wooden floors provide modern showroom aesthetic
- Excellent signage opportunity
- Close Proximity to Muni's J Church line (AVG Weekday: 14,000 Riders) and bus lines



INCORPORATED | EST. 1922

This Statement with the information it contains is given with the understanding that all negotiations relating to the purchase, renting or leasing of the property described above shall be conducted through Blatteis Realty Company. The above information, while not guaranteed, has been secured from sources believed to be reliable. Blatteis Realty has not verified its accuracy and make no guarantees, warranty or representation regarding this information and it is published subject to the possibility of errors, omissions, changes of listing information including price, term, financing, or withdrawal without notice. We include projections, estimates, opinions and/or assumptions, for example only, and they may not represent current or future performance of the property. You should consult your tax and legal advisors before to verify the validity of estimates.

**SHARON KIM**

415.321.7491 | sk@brsf.co | DRE #01865334

**JEREMY BLATTEIS**

415.321.7493 | jfb@brsf.co | DRE #01460566

**sfretail.net**



## RETAIL/OFFICE SPACE

COLORFUL DÉCOR AND WARM WOODEN FLOORS  
PROVIDE MODERN SHOWROOM AESTHETIC



INCORPORATED | EST. 1922

This Statement with the information it contains is given with the understanding that all negotiations relating to the purchase, renting or leasing of the property described above shall be conducted through Blatteis Realty Company. The above information, while not guaranteed, has been secured from sources believed to be reliable. Blatteis Realty has not verified its accuracy and make no guarantees, warranty or representation regarding this information and it is published subject to the possibility of errors, omissions, changes of listing information including price, term, financing, or withdrawal without notice. We include projections, estimates, opinions and/or assumptions, for example only, and they may not represent current or future performance of the property. You should consult your tax and legal advisors before to verify the validity of estimates.

**SHARON KIM**

415.321.7491 | sk@brsf.co | DRE #01865334

**JEREMY BLATTEIS**

415.321.7493 | jfb@brsf.co | DRE #01460566

**sfretail.net**



## SHARED BACKYARD GARDEN



INCORPORATED | EST. 1922

This Statement with the information it contains is given with the understanding that all negotiations relating to the purchase, renting or leasing of the property described above shall be conducted through Blatteis Realty Company. The above information, while not guaranteed, has been secured from sources believed to be reliable. Blatteis Realty has not verified its accuracy and make no guarantees, warranty or representation regarding this information and it is published subject to the possibility of errors, omissions, changes of listing information including price, term, financing, or withdrawal without notice. We include projections, estimates, opinions and/or assumptions, for example only, and they may not represent current or future performance of the property. You should consult your tax and legal advisors before to verify the validity of estimates.

**SHARON KIM**

415.321.7491 | [sk@brsf.co](mailto:sk@brsf.co) | DRE #01865334

**JEREMY BLATTEIS**

415.321.7493 | [jfb@brsf.co](mailto:jfb@brsf.co) | DRE #01460566

**[sfretail.net](http://sfretail.net)**



# LOCATED ON THE WEST END OF DELIGHTFULLY SUNNY AND COVETED NOE VALLEY SHOPPING CORRIDOR



One of San Francisco's most visited dining & shopping districts.  
Close Proximity to Muni's J Church line (AVG Weekday: 14,000 Riders) and bus lines.



INCORPORATED | EST. 1922

This Statement with the information it contains is given with the understanding that all negotiations relating to the purchase, renting or leasing of the property described above shall be conducted through Blatteis Realty Company. The above information, while not guaranteed, has been secured from sources believed to be reliable. Blatteis Realty has not verified its accuracy and make no guarantees, warranty or representation regarding this information and it is published subject to the possibility of errors, omissions, changes of listing information including price, term, financing, or withdrawal without notice. We include projections, estimates, opinions and/or assumptions, for example only, and they may not represent current or future performance of the property. You should consult your tax and legal advisors before to verify the validity of estimates.

44 Montgomery Suite 1288, San Francisco, CA 94104 | t: 415.981.2844 | f: 415.981.4986 | info@brsf.co | DRE #01421282

**SHARON KIM**

415.321.7491 | sk@brsf.co | DRE #01865334

**JEREMY BLATTEIS**

415.321.7493 | jfb@brsf.co | DRE #01460566

**sfretail.net**





● Popular Nearby Tenants

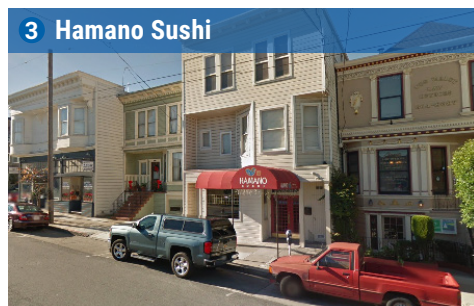
## POPULAR NEARBY TENANTS



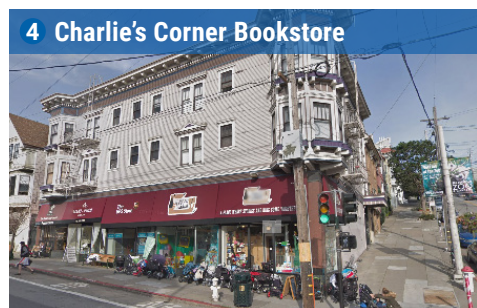
1 Bank of America



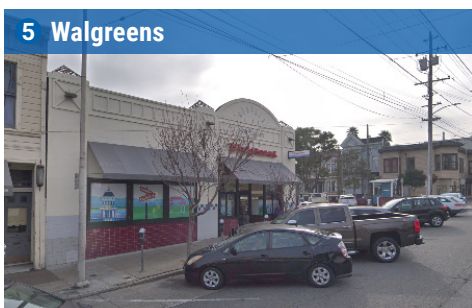
2 Cotton Basics



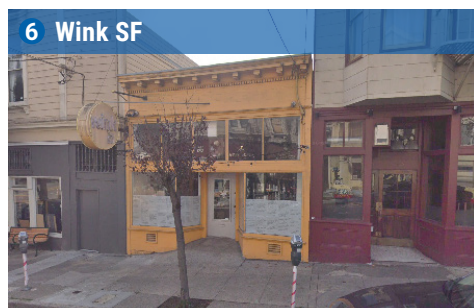
3 Hamano Sushi



4 Charlie's Corner Bookstore



5 Walgreens



6 Wink SF



INCORPORATED | EST. 1922

This Statement with the information it contains is given with the understanding that all negotiations relating to the purchase, renting or leasing of the property described above shall be conducted through Blatteis Realty Company. The above information, while not guaranteed, has been secured from sources believed to be reliable. Blatteis Realty has not verified its accuracy and make no guarantees, warranty or representation regarding this information and it is published subject to the possibility of errors, omissions, changes of listing information including price, term, financing, or withdrawal without notice. We include projections, estimates, opinions and/or assumptions, for example only, and they may not represent current or future performance of the property. You should consult your tax and legal advisors before to verify the validity of estimates.

**SHARON KIM**

415.321.7491 | sk@brsf.co | DRE #01865334

**JEREMY BLATTEIS**

415.321.7493 | jfb@brsf.co | DRE #01460566

**sfretail.net**