

## PROFESSIONAL TAILOR SHOP FOR SALE | \$69,000

INCLUDES ALL EQUIPMENT AND PERSONAL TRAINING SESSION!

### SAN MATEO COUNTY

PROFESSIONAL SEWING & ALTERATIONS AGENCY  
FOR SALE IN COVETED UPSCALE DOWNTOWN  
SILICON VALLEY LOCATION! GOOD INCOME.

### CONFIDENTIAL LISTING

### KEY MONEY: \$69,000

### ±1,200 SF

BUSINESS FOR SALE/BUSINESS OPPORTUNITY

**PLEASE BE PREPARED TO SIGN AN NDA.**

View by appointment only.

### NOW AVAILABLE EXCELLENT DOWNTOWN LOCATION!

The space is conveniently situated within one of Silicon Valley's major retail destinations. The neighborhood is comprised of upscale retail shops and popular restaurants in addition to an affluent mix of apartment complexes and single-family homes.

#### PROPERTY HIGHLIGHTS

- Professional Alteration Agency
- Superb Turnkey Opportunity
- Good Income
- Spacious Workspace



INCORPORATED | EST. 1922

**LUCIA J. YOON**

415.321.7485 | ly@brsf.co | DRE #01901890

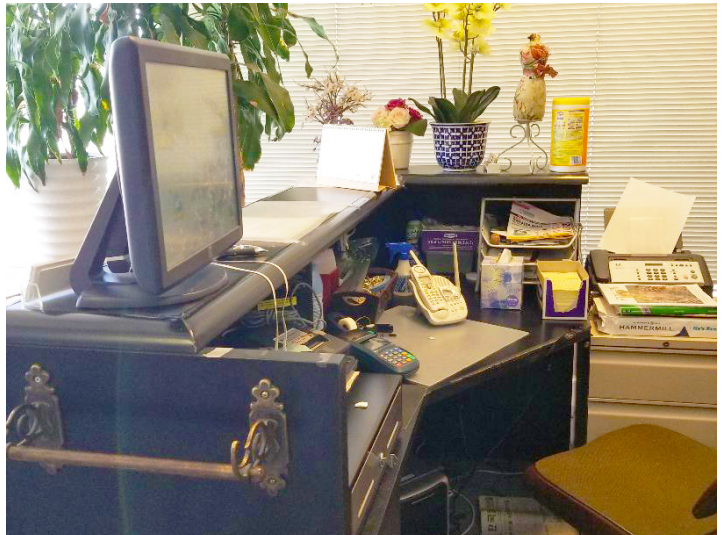
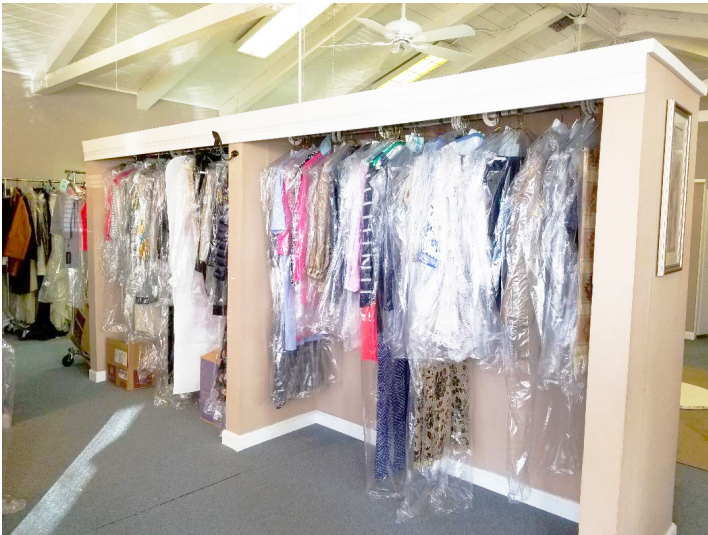
[sfretail.net](http://sfretail.net)

This Statement with the information it contains is given with the understanding that all negotiations relating to the purchase, renting or leasing of the property described above shall be conducted through Blatteis Realty Company. The above information, while not guaranteed, has been secured from sources believed to be reliable. Blatteis Realty has not verified its accuracy and make no guarantees, warranty or representation regarding this information and it is published subject to the possibility of errors, omissions, changes of listing information including price, term, financing, or withdrawal without notice. We include projections, estimates, opinions and/or assumptions, for example only, and they may not represent current or future performance of the property. You should consult your tax and legal advisors before to verify the validity of estimates.

44 Montgomery Suite 1288, San Francisco, CA 94104 | t: 415.981.2844 | f: 415.981.4986 | info@brsf.co | DRE #01421282



## INTERIOR



INCORPORATED | EST. 1922

**LUCIA J. YOON**

415.321.7485 | [ly@brsf.co](mailto:ly@brsf.co) | DRE #01901890

**[sfretail.net](http://sfretail.net)**

This Statement with the information it contains is given with the understanding that all negotiations relating to the purchase, renting or leasing of the property described above shall be conducted through Blatteis Realty Company. The above information, while not guaranteed, has been secured from sources believed to be reliable. Blatteis Realty has not verified its accuracy and make no guarantees, warranty or representation regarding this information and it is published subject to the possibility of errors, omissions, changes of listing information including price, term, financing, or withdrawal without notice. We include projections, estimates, opinions and/or assumptions, for example only, and they may not represent current or future performance of the property. You should consult your tax and legal advisors before to verify the validity of estimates.

44 Montgomery Suite 1288, San Francisco, CA 94104 | t: 415.981.2844 | f: 415.981.4986 | [info@brsf.co](mailto:info@brsf.co) | DRE #01421282



## INTERIOR



INCORPORATED | EST. 1922

**LUCIA J. YOON**

415.321.7485 | [ly@brsf.co](mailto:ly@brsf.co) | DRE #01901890

**[sfretail.net](http://sfretail.net)**

This Statement with the information it contains is given with the understanding that all negotiations relating to the purchase, renting or leasing of the property described above shall be conducted through Blatteis Realty Company. The above information, while not guaranteed, has been secured from sources believed to be reliable. Blatteis Realty has not verified its accuracy and make no guarantees, warranty or representation regarding this information and it is published subject to the possibility of errors, omissions, changes of listing information including price, term, financing, or withdrawal without notice. We include projections, estimates, opinions and/or assumptions, for example only, and they may not represent current or future performance of the property. You should consult your tax and legal advisors before to verify the validity of estimates.

44 Montgomery Suite 1288, San Francisco, CA 94104 | t: 415.981.2844 | f: 415.981.4986 | [info@brsf.co](mailto:info@brsf.co) | DRE #01421282